



**Suffolk Safeguarding
Children Board**

Annual Report 2017/18



Contents

	Page
Glossary	3
1. Introduction - Independent Chair	4
1.1 - LSCB Lay Persons' Report	6
2. The Suffolk Context	7
2.1 - Summary of Child Protection Statistics in Suffolk	9
3. What we have achieved in the past 12 months	11
3.1 - LSCB Priorities for 2017/18	11
4. Other areas of focus and discussion for the LSCB over the past 12 months	18
Including:	
o The Prevent Duty and People Vulnerable to Radicalisation (VTR) in Suffolk	19
o Missing Children Annual Report	20
o Private Fostering Annual Report	20
o Local Authority Designated Officer (LADO) Annual Report	21
o Suffolk Serious Case Reviews (SCRs)	22
5. How the LSCB subgroups have supported outcomes in 2017/18	24
5.1 - Child Exploitation (CE) Subgroup	24
5.2 - Learning and Improvement Subgroup	24
5.3 - Policy, Planning and Engagement Subgroup	27
5.4 - Child Death Overview Panel	28
5.5 - Case Review Panel	28
5.6 - Area Safeguarding Network Groups (ASNGs)	29
5.7 - Online Safety Subgroup	29
5.8 - Health Operational Subgroup	30
6. What we plan to do - Priorities for 2018/19	31
7. Safeguarding Training in Suffolk	32
8. Board Structure and Governance Arrangements	33
8.1 - The Structure of Suffolk LSCB and its partnerships	33
9. LSCB Budget and Expenditure	34
10. Appendices	37
10.1 - LSCB Subgroup Structure	37
10.2 - Levels of Membership of Suffolk LSCB	38
10.3 - List of Board Members	39
10.4 - Members attendance over the past twelve months	41
10.5 - Safeguarding Courses	43

Glossary

CAF	Common Assessment Framework - The CAF aims to provide a simple process for a broad assessment of children's needs and strengths; taking account of the roles of parents/carers and environmental factors on their development
Cafcass	Children and Family Court Advisory and Support Service
CDOP	Child Death Overview Panel
CiC	Children in Care
CIN	Children in Need
CPP	Child Protection Plan
CE	Child Exploitation
ICPC	International Child Protection Conference
LAC	Looked After Children
MARAC	Multi-Agency Risk Assessment Conference - A MARAC is a meeting where information is shared on the highest risk domestic abuse cases between representatives of local police, health, child protection, housing practitioners, Independent Domestic Violence Advisors (IDVAs), probation and other specialists from the statutory and voluntary sectors.
MASH	Multi-Agency Safeguarding Hub – The Multi-Agency Safeguarding Hub (MASH) is made up of a range of organisations in Suffolk who are responsible for safeguarding adults and children. These organisations include: <ul style="list-style-type: none"> • Suffolk County Council • Suffolk Police • Health Services • District and Borough Council Housing Services • Education • Probation • The Youth Offending Service
NEET	A young person (16-24) 'Not in Education, Employment or Training'
S47 enquiries	A Section 47 enquiry means the authority must carry out an investigation when they have 'reasonable cause to suspect that a child who lives, or is found, in their area is suffering, or is likely to suffer, significant harm'. The enquiry will involve an assessment of the child's needs and the ability of those caring for the child to meet them. The aim is to decide whether any action should be taken to safeguard the child.

1. Introduction - Independent Chair

I am very pleased to present the 2017-8 annual report of the Local Safeguarding Children Board. The report covers in detail progress over the last year and priorities for 2018-19 but I would like to highlight some key messages here.

Over this year we have seen the continued strengthening of multi-agency safeguarding arrangements in Suffolk. Partners are committed to working together and Board members, and the organisations they represent, know and are open about the reality of the challenges they face and remain willing to work collaboratively and contribute to thinking ahead about responsibilities, risks, ambitions and priorities. I would like to thank partners for the improvement in consistent attendance at the subgroups of the Board, which I asked for in the report last year, and which has contributed to the progress in addressing the Board's priorities.

To further promote wider engagement in safeguarding we held a conference this year with Parish and Town Councils to enhance their understanding of safeguarding and how they can contribute to keeping children and young people safe. We have a similar event planned with the Faith Communities in 2018-9.

The MASH continues to deliver well with consistently applied thresholds and prompt action leading to carefully considered interventions. Strategies to manage demand, including the well-established professionals' consultation line, are having an impact, with the level of inappropriate referrals slowly reducing. Suffolk Police in particular have worked hard to achieve this. This, along with the effective early help offer, is ensuring children and young people's needs are being met by the appropriate services.

The Learning and Improvement subgroup undertakes a robust analysis of performance through a detailed and effective programme of audit and scrutiny. Data analysis provided to the Board continues to improve. Overall the data shows an effective and robust safeguarding system in place in Suffolk.

The numbers of children in need, on a child protection plan and looked after are all rising and the complexity of the needs of these children is also increasing. This is putting pressure on the resources of all agencies, and in particular, Social Care, to meet this demand at a time of financial constraint. In addition, recruitment across several partner agencies continues to be a challenge both in terms of actual numbers of staff and the appropriate mix of newly qualified and experienced staff. Senior managers need to continue to give attention to creative recruitment and retention strategies, including considering how competitive remuneration packages are to neighbouring authorities

In line with national trends there is an increasing number of permanent and fixed term exclusions of children and young people from school, as well as many children on part time timetables. This is of significant concern, not just for their academic attainment but for the increased safeguarding risk. In the year covered by this report 30 children on a child protection plan were subject to a fixed term exclusion. It is important that the Local Authority, the Regional Schools' Commissioner and all schools work together to address this concern. The local authority has appointed an inclusion consultant to develop an enhanced strategy to reduce exclusion and the Board will be monitoring the effectiveness of this. All schools need to consider further how they improve the inclusion of disadvantaged children and those with behavioural challenges and other agencies need to consider what services they can provide to support this.

This year the Board received the report of two external inspections. Firstly, the OFSTED inspected children social care services in September 2017, as part of a pilot to test new inspection arrangements. Services were assessed as good in all areas of the inspection with a great many examples of good practice some of which were strong and effective leadership, effective early help, managing risk, work with missing children work with children and young people on the edge of care and permanence planning for children looked after. The inspection found that partnership working was good and that partners have worked well together to strengthen the response to missing children and child sexual exploitation, two areas that we identified as improving in the last annual report. OFSTED found we are still not where we should be in our multi agency strategy to work with neglect and the Board is reviewing the strategy and training around neglect and undertaking audits to monitor practice. Also, the OFSTED inspection of Cafcass which we were pleased to note, resulted in a grading of 'outstanding'.

The impact on the lives of young people from exploitation and involvement in gangs and groups is a of real concern to communities across the county. The Board's detailed exploitation plan continues to be implemented and action on this is detailed in the report. The Board is supporting the implementation of the Gangs and Groups Strategy lead by the Stronger and Safer Community Group and will monitoring its effectiveness.

The Case review panel is effective in considering cases where there is concern about joint working and referrals for serious case reviews and looks at examples of good practice. Learning is disseminated through learning briefings, training and the LSCB newsletter as well as discussed at the Board meetings. The Board completed one serious case review this year and the findings are detailed in the body of the report. I would like to highlight the finding that it is essential that practitioners are able to challenge one another effectively when they are of the view that work with a child of young person is not keeping them safe. This must be supported through the supervision of the workers by managers and the use of the LSCB escalation policy.

The recent tragic death of a young man in Ipswich was after the formal period of this report but I feel it is important to acknowledge it here and report that the case review panel will be reviewing the multi-agency work with this young man to see what lessons can be learned to improve support and effective interventions in the future.

The new Working Together to Safeguard Children guidance came into force in July 2018. Senior leaders across the Local Authority, the Clinical Commissioning Groups and Suffolk Police are beginning to develop their new multi-agency safeguarding arrangements which will replace the LSCB by September 2019. They need to ensure this is done carefully, builds on what we know works and results in arrangements that are as well supported and effective as the LSCB.

Finally, I would to thank members of the Board, the Board staff and practitioners and managers from across the partnership of our voluntary, community and statutory agencies for their commitment and hard work which is delivering effective services to keep children and young people safer in Suffolk.

Sue Hadley
Independent Chair
Suffolk Local Safeguarding Children Board

1.1 LSCB Lay Persons' Report

Suffolk LSCB are fortunate to have two active and committed Lay members sitting on the Board. Our Lay members provide scrutiny and challenge from a community-based perspective. A report from the Lay members on progress is below.

The work of the Board has continued to evolve over the last 12 months. A number of representatives have changed, and new faces have injected some new dynamics into Board discussions, but it continues to be effective in engaging with partners and encouraging them to work together in a common cause and overcome inter-agency challenges and budgetary restraints.

The Board continues to provide a forum for partners to have their say and hear what others are saying about the diverse range of challenges they each face when providing effective safeguarding.

The Lay members recognise that their role continues to be to ask questions, seek clarification and explanation of issues the partners may not always feel comfortable to raise, and to try to ground comment in a community perspective, rather than professional jargon.

The Board continues its transition to meet the changing role of LSCBs and to establish whether, and in what form, it will continue or be replaced by a new mechanism.

Suffolk LSCB remains well placed and served to meet the challenges with a dedicated team of committed individuals enjoying the support of the partners recognising that the Board provides a place to share problems and develop solutions.

2. The Suffolk Context

152,000 Children and young people under 18
20% of the total population

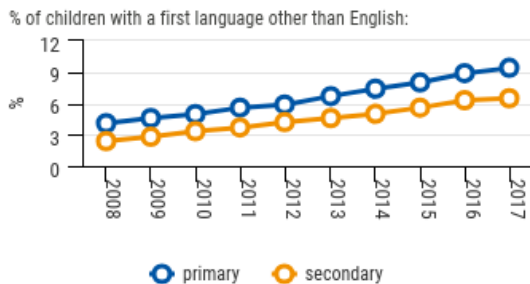
3.5% The CYP population is forecasted to grow by 3.5% over the next 10 years (ONS)*
 *However, housing growth (which feeds into school place planning data), indicates a higher growth rate



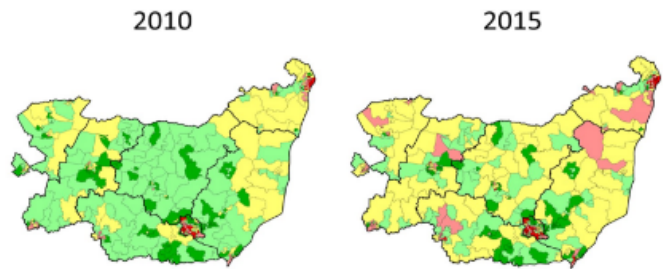
8% Total child population from minority ethnic groups
 National figure: 21%

Local largest minority ethnic groups:
 Mixed/Multiple ethnic group (4.3%)
 Asian/Asian British (2.5%)

8% Children with a first language other than English
 National figure: 18%



Deprivation in Suffolk (2010 v 2015)



Red = Most deprived

© Crown copyright and database rights 2015 Ordnance Survey 100023395

Suffolk has become relatively more deprived when compared to other counties in England between 2007-2015, moving from 116 (out of 149) in 2007 to 102 (out of 152) in 2015.

Inequalities in Suffolk are no longer confined to the largest urban areas. We are now seeing areas in smaller towns featuring in the most deprived parts of England, while rural areas have also seen their position worsen.

1 in 7
 Children living in relative poverty in Suffolk

1 in 6
 Children living in poverty nationally

The 2017 Social Mobility Index found no social mobility 'hot spots' in Suffolk in 2017. There are 3 'cold spots' in Ipswich, Babergh and Forest Heath. These areas are where people from disadvantaged backgrounds are least likely to make social progress.

3.9%
 16-17 year olds not in employment, education or training (NEET)
 National = 2.8% (Jan 18-Mar 18)

248 per 100,000
 First time entrants in to the youth justice system
 England = 304 per 100,000 (Oct 16-Sept 17)

16.0 per 1,000
 Under 18 conceptions
 National = 18.8 per 1,000 (2015/16)

20.9%
 Children with one or more decayed, missing or filled teeth (age five)
 National = 24.8% (2014/15)

31.0%
 Year 6 children overweight or obese
 National = 34.2% (2016/17)

77.3%
 Breastfeeding initiation
 National = 74.5% (2016/17)

46.0% Breastfeeding
 At 6-8 weeks
 National = 44.4% (2016/17)

3 Social mobility 'coldspots'
 Ipswich, Forest Heath and Babergh (2017)

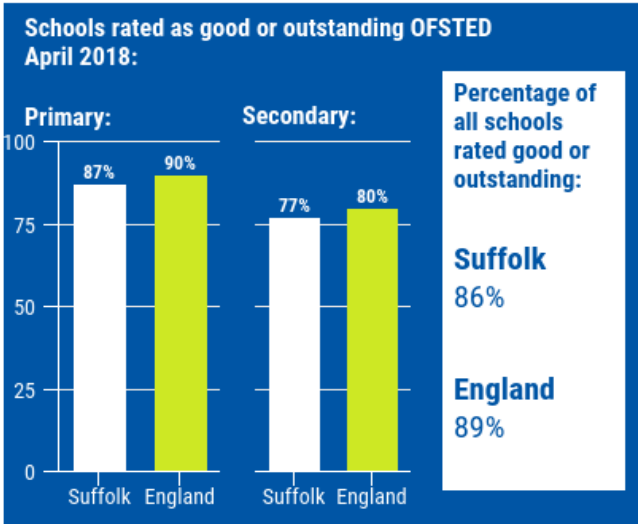
3.1 per 1,000
 Infant mortality rate
 (under 1 year)
 National= 3.7 per 1,000

251
 Children with complex and
 enduring conditions requiring
 a social care service

11,185
 Estimated children and
 young people under 18
 with a disability

3,822
 Young people with an
 EHCP / Statement of
 SEN

An integrated service for
 disabled children and
 young people has been
 established to provide
 focus and continuity for
 children and families
 through age 0-25



Need in Suffolk:

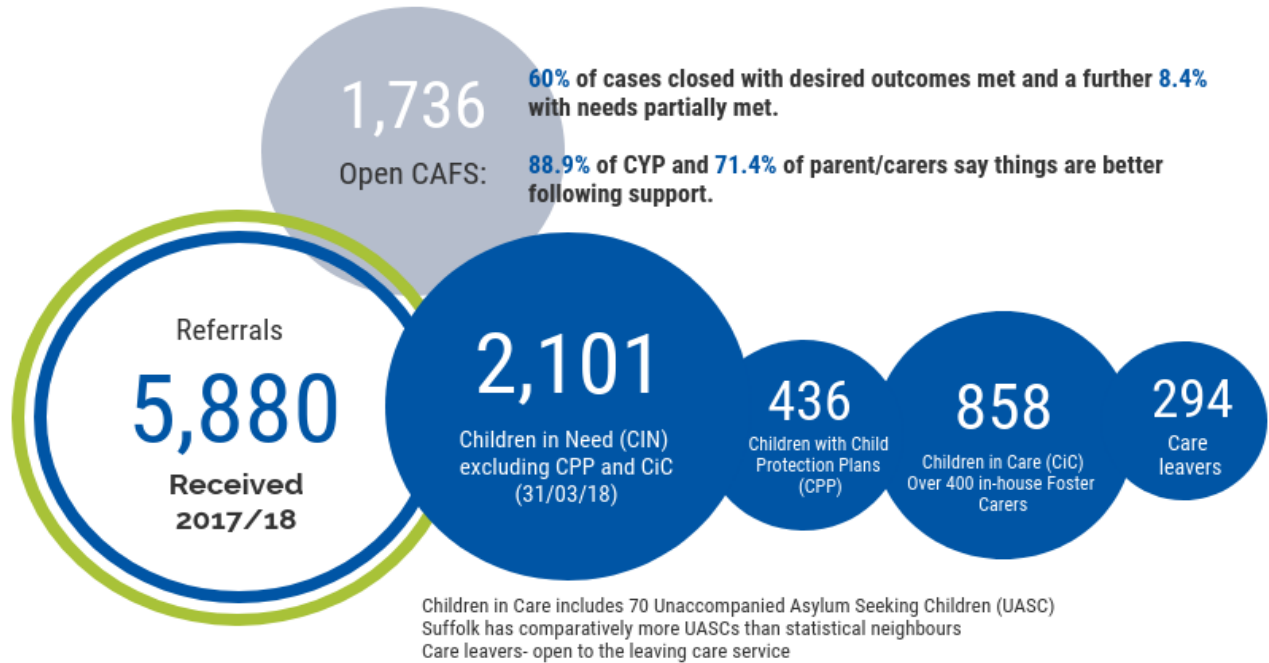
- Neglect and abuse
- Child exploitation
- Gangs and inter-related drug issues
- Emotional wellbeing / mental health
- Number of children in care
- NEET
- Vigilance: FGM , HBA, FM, radicalisation

71% Children achieving a good level of development at the end of the EYFS (Reception Year) (better than national)

57% KS2 pupils achieving at least the expected standard in Reading, Writing and maths: 57% (4% below national)

62.4% Percentage achieving the threshold (C grade) in English and Maths GCSEs (2.1% below national)

-0.01 Progress 8 score for State Funded schools (above national -0.03)



2.1 Summary of Child Protection Statistics in Suffolk

The LSCB reviews an extensive range of performance data through its Learning and Improvement Subgroup. This is a snapshot of some of the key child protection data.

	April 2017	May 2017	June 2017	July 2017	Aug 2017	Sept 2017	Oct 2017	Nov 2017	Dec 2017	Jan 2018	Feb 2018	March 2018	Rate per 10,000 April 2018
Number of Children on Child Protection Plans	458	464	450	438	466	483	469	450	435	425	454	463	30.2 (29.0)

The number of children on a Child Protection Plan remained relatively stable over the past 12 months. The Suffolk rate per 10,000 of the population remains lower than regional and statistical neighbours. The Child in Need (CIN) Census for 2016/17 published in September 2017 shows that the Rate of Child Protection Plans per 10,000 of the child population in Suffolk was 28.6 which remains lower than both Statistical Neighbours (38.4) and England (43.3).

	March 2015	March 2016	March 2017	March 2018
Number of S47 enquiries started in past 12 months	2363	2597	1686	1480
Rate per 10,000 of Suffolk child population	156.3	171.8	111.4	94.5

This is lower than our statistical neighbours.

	Suffolk 16/17	National	Statistical Neighbours
Rate of S47 Enquiries completed per 10,000 0-17 year olds (rolling year figure)	109.3	142.3	114.3

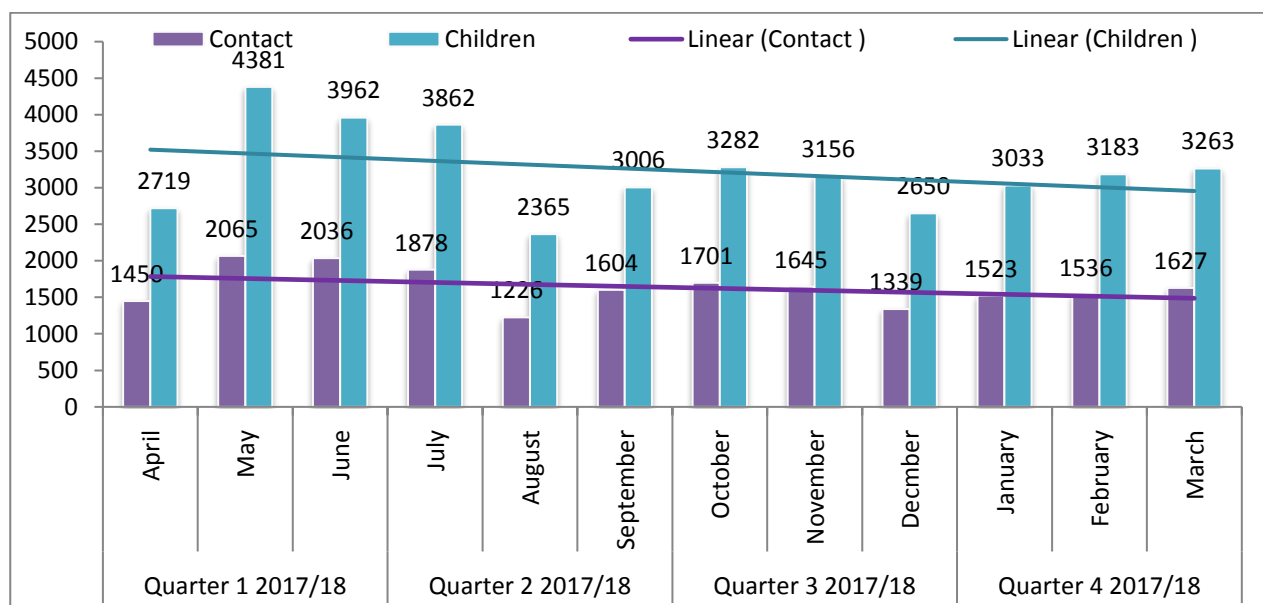
	March 2015	March 2017	March 2018
% of Section 47 Enquiries that don't go to Child Protection Conference	70.6%	69.6%	56%

This indicates that S47 enquiries more often result in a Child Protection Conference than previous years. This shows an improvement in the quality of cases that meet the threshold for a S47 enquiry.

	March 2016	March 2017	March 2018
% of re-referrals to Social Care in the past 12 months	22%	23%	21%

The % of re-referrals to specialist services has fallen, which is good. This figure has been raised as a concern in previous years so the fact that it continues to decrease is positive.

Number of Contacts processed by Multi-Agency Safeguarding Hub (MASH)



The trend lines for both contacts and numbers of children both show a decline over the period. This is welcome news and suggests that strategies to reduce contacts where the MASH doesn't add value, has had some impact.

A significant proportion of MASH contact volume results in an outcome of no further action (NFA). The objective of the MASH demand strategy is to reduce the number of NFA contacts without reducing the number of contacts for which the MASH does add value. This is achieved by promotion of the Professional Consultation Line, which provides an opportunity for referrers to discuss with MASH staff whether a referral should be submitted or not. The MASH delivers information at all school safeguarding training days and targets colleagues in health and the wider community to improve understanding of LSCB thresholds.

3. What we have achieved in the past 12 months

3.1 LSCB Priorities for 2017/18

Our priorities for the twelve months to April 2018 were:

We would continue our **core business**:

1. Continue to evaluate the effectiveness of safeguarding provision across the LSCB partnership through a range of performance reports and audits.
2. Ensure that learning from case reviews and the Child Death Overview Panel is effectively shared, monitored and embedded in practice.
3. Monitor the impact of austerity and financial constraints on partners' safeguarding provision.
4. Effective working across the key strategic Boards, in particular the Safeguarding Adults Board, Corporate Parenting Board, Health and Wellbeing Board, Alliance Boards and Strong and Safe Communities Group.
5. Ensure that partners are well placed to deliver their strategic safeguarding arrangements in line with the expected government guidance and changes to legislation.

The LSCB continue to gather an extensive range of performance and audit data which is monitored through its Learning and Improvement Subgroup. The Child Death Overview Panel monitors and reports on every child death in Suffolk. These subgroups are covered in more detail later in the report.

The LSCB continues to monitor the effect of austerity and financial constraints across the partnership and risks are raised and monitored if these constraints affect safeguarding provision.

There continues to be effective partnership working across the key strategic boards, in particular, the joint chairing of the Safeguarding Children and Adult Boards and joining up the business support functions. The Chairs of the LSCB and Strong and Safe Communities Group meet quarterly.

Government legislation affecting the LSCB as a result of the Children and Social Work Act

Following the Children and Social Work Act 2017 and development of Government guidance in the form of 'Working Together to Safeguard Children', there is a mandated requirement to review and update multi-agency strategic safeguarding arrangements in Suffolk. The new arrangements will replace the Suffolk Local Safeguarding Children Board (LSCB) and need to be developed and published by April 2019 with implementation by no later than September 2019.

To comply with government timescales, there was presentation of the requirements in January 2018 to the Executives from the agencies responsible for delivery of the new arrangements; Local Authority, Chief Officer of Suffolk Constabulary and the Clinical Commissioning Groups (CCG).

Following initial discussions, designated safeguarding leads for each of the agencies were identified to progress the development of arrangements in line with the described timeline and a small working group was created to facilitate discussion and completion of work streams. It was agreed to build on what currently works well and to not lose the existing good practice.

The proposed timescales for implementation in Suffolk are:

Options presented to Chief Officers by Review Group	July 2018
Options agreed by LSCB Board	End October 2018
Consultations with LSCB Partners	November-December 2018
Suffolk Safeguarding Arrangements agreed	April 2019
Implementation of the new arrangements	1 July 2019

(These are subject to change)

The LSCB's **specific priorities** were:

Lead the delivery of the Child Exploitation Action Plan across Suffolk. This will recognise the impact of the multi-agency response to the County Lines and Gangs and Groups in Suffolk.

The Child Exploitation Strategic Subgroup has gone from strength to strength during the past twelve months under the chairmanship of a Detective Superintendent from Suffolk Constabulary, underpinned by a detailed multi-agency action plan which is widely shared across the partnership.

Suffolk appointed a Child Exploitation Co-ordinator in May 2018 who will work closely with the Missing Children Co-ordinator and the Chair of the CE subgroup to assist with the delivery of the Child Exploitation Action Plan. Some of the operational strands of work delivered as part of the plan are detailed below.

A Child Exploitation (CE) toolkit is used in the Multi Agency Safeguarding Hub (MASH) to assess if a young person is at risk of exploitation at the time of a referral. This toolkit has been widely shared across the partnership and is part of basic safeguarding training. It has helped with the assessment of young people who may be at risk of exploitation in the MASH.

A co-ordinated approach in the MASH ensures that the most vulnerable and missing children are discussed at weekly Tactical Tasking and Co-ordination Group (TTCG) meetings. Monthly Area Safeguarding Network Group meetings now include a Children at Risk of Exploitation (CaRE) item on the agenda to increase local practitioners' knowledge and awareness of issues locally. These meetings also include updates from the Make a Change County Co-ordinator whose team work with the children at most risk of exploitation.

The number of Return Interviews with children who go missing has increased significantly, this helps identify those at risk of exploitation and helps minimise the risk of them going missing again.

Policies including a revised Child Exploitation Strategy, Privately Fostered Children's Policy and an Unaccompanied Asylum Seeker Policy have been updated in the past 12 months, these underpin the work of practitioners and ensure consistency.

Child Exploitation training across the partnership has been reviewed and updated to ensure all partners focus on this as part of basic training. This includes Schools Choice colleagues, who deliver training to most Suffolk schools.

The LSCB worked closely with District and Borough Council colleagues to ensure that basic Child Exploitation awareness training is available to taxi drivers across Suffolk, so they recognise the signs of exploitation and know what to do if they have a concern.

The LSCB worked closely with Suffolk Constabulary and Trading Standards colleagues in Summer 2017 sending exploitation awareness posters and documentation to 165 hotels and B+B's across the county. This was part of a regional approach using nationally recognised materials. Suffolk Constabulary carried out further targeted work with hotels where concerns had been raised.

All County Councillors received CE awareness training in Summer 2017 and the LSCB purchased an online CE training package made available to all partners and widely advertised in the LSCB newsletter and website.

There will be further work within children's homes to look at additional strategies to prevent missing episodes of some of our most vulnerable children. A bespoke training programme for Children's Home managers is being developed.

Education colleagues developed an 'unofficial exclusions' mailbox to raise awareness of young people unofficially excluded from school who may be at risk of exploitation. This is an area of concern for the LSCB and has been identified as a priority for 2018-19.

Targeted work has taken place in Ipswich through our Volunteering Matters colleagues delivering the WASSUP programme, working with vulnerable young people and risk to gangs and exploitation in the Ipswich area. This has recently had additional funding from the Police and Crime Commissioner.

Just Enough UK have secured funding to run workshops on Modern Day Slavery, which includes Gangs and Groups, Child Exploitation, in 56 primary schools in Ipswich. The organisation is working closely with Education and LSCB colleagues to raise awareness of the programme and its benefits.

The Children's Society have been commissioned to deliver training on CE and criminal exploitation of children and young people with learning disabilities. There were 6 basic awareness raising sessions for wider multi-agency workers and 3 advanced level sessions for Multi-Agency Safeguarding Hub staff, Make a Change Team, Social Workers and Early Help Practice Leads, started in Spring 2018.

The LSCB continues to monitor the Suffolk Gangs and Groups Strategy and action plan through regular updates at Board meetings and through the Child Exploitation subgroup. Suffolk Constabulary, along with other key stakeholders, have appointed a new Gangs and County Lines Manager to coordinate the response to the rising issue of gang violence within Suffolk. A new Urban Street Gangs Unit has also been created, which works alongside the Manager. The Strategic Objectives held within the Action Plan are:

1. Enhance community safety, by making Ipswich and Suffolk a less viable County Lines drugs market, and disrupt Ipswich based Urban Street Gang criminality and harm.
2. Safeguard children, young and vulnerable persons from being exploited by Urban Street Gang and County Lines crime and prevent the grooming of new victims.
3. Establish community engagement and confidence programmes and communications protocols in order to develop local solutions and promote collaborative working.
4. Improve understanding of high harm (heroin and crack cocaine) and gang influenced drug markets in Ipswich and Suffolk and reduce the risks to dependent users.
5. Develop and maintain a collaborative response to achieving the tactical outcomes of the Strategic Action Plan within the county and with external partners.

Whilst outside the timescales for this report, the LSCB Serious Case Review Panel has received referrals for the recent Ipswich gang related murder and stabbing and the Chair is considering her decision regarding commissioning a serious case review.

Monitor the effectiveness of a Graded Care Profile framework to enable practitioners across the tiers of support to assess the risk of neglect and audit to measure its effectiveness.

The LSCB conducted a multi-agency thematic audit on the Graded Care Profile (GCP) to ascertain how the tool is being used with families in children's services and more specifically, to explore its impact on practice and its impact on worker's confidence in working with neglect. The number of cases audited was relatively small but sufficient to highlight learning and recommendations.

What is working well?

- The majority of cases show that the GCP is being completed in a timely manner from receipt of referral or case being opened or transferred.
- In cases where a Social Work assessment is being completed, the GCP is being used to inform the assessment.
- In the majority of cases the family has been involved in making the plan of support.
- Plans are dynamic in most cases.
- There is evidence in most cases that the plan is making a difference to the child.
- Case are being managed at the appropriate level.
- The GCP seems to be contributing to positive changes for the child.

What are we worried about?

- In some cases, there is no evidence that the GCP has been used to inform the plan.
- Because of the GCP not being used to inform the plan, the other workers and agencies haven't been fully involved in discussing the assessment and analysis.
- We are worried that some of our partners are not using the tool enough in their case work.

The LSCB will conduct further audit work in late 2018 to ensure that the Workforce Development team undertake GCP awareness raising sessions for all practice managers across Social Care and Early Help and Health and Children Centre managers in order that managers can fully supervise and support practitioners using the tool. The LSCB will audit to ensure that managers understand their role in the promotion of the GCP and its value in informing assessment and planning and ask that a full evaluation of the impact of the GCP training is undertaken.

The LSCB Professional Advisor is leading the review and development of the current Neglect Strategy and Action Plan. This will be implemented in Autumn 2018.

Ensure that the views of young people and families influence safeguarding provision across Suffolk.

The LSCB continue to ask for evidence of young people's involvement in developing services as part of the Section 11 Safeguarding Audit process with our statutory partners. There are some good examples of engagement from our statutory partner colleagues.

The LSCB have engaged directly with many young people in the past 12 months, particularly through consultation events at West Suffolk College and Suffolk New College. These events gathered responses from over 1500 young people. Work is underway with Lowestoft College.

The focus of the consultations was on young people's emotional health and wellbeing but also their awareness and understanding of the LSCB.

A summary of the findings:

- Most were unaware of the LSCB so we need to raise our profile by having greater engagement with young people in Suffolk.

- We will have more face to face events in colleges and schools, involve young people with helping us to design their own page on our website and work more closely with our Suffolk County Council Engagement Hub colleagues, who are more experienced in engaging with young people than us.
- The young people felt the Suffolk LSCB website wasn't child friendly, so we will be focussing a lot of effort on this over the next 6 months to improve it.
- The highest response to the question in the survey 'what you are worried about?' - was emotional health and wellbeing. The LSCB need to work to alleviate this and have signposted to various sources of support and guidance, particularly through the new Emotional Health and Wellbeing Hub.

Joint working continues with our colleagues on the CYP Engagement Hub and LSCB central team member attends the Children in Care Council. LSCB central team colleagues also worked with Health and Social Care students at Suffolk One to feed into their coursework around the role of Safeguarding Children Boards and took the opportunity to ascertain their views on the work of the LSCB.

Engaging with Young People is still an area for improvement for the LSCB and this has been highlighted as a priority for 2018-19. We intend to undertake some research to find out what other LSCB's are doing and to establish a distinct group of young people who can become a regular source of engagement and consultation. The Engagement Hub will support us in the training of this group of young people.

Ensure that the effect of Domestic Abuse on children is appropriately identified and addressed through the Domestic Abuse Strategy.

The Suffolk Domestic Abuse Strategy, now called Suffolk Violence Against Woman and Girls, Men and Boys (VAWGMB) Strategy has developed significantly over the past 12 months. The LSCB play an active part in the multi-agency VAWGMB Steering Group. This outlines the Suffolk response to the Government's ten offences which make up the VAWGMB Agenda.

Self-assessment work was undertaken in Suffolk during 2017. This matched service provision against the Home Office National Statement of Expectations and identified a number of areas for improvement. These included work with perpetrators and more proactive work with hard to reach communities. These are included in the VAWGMB action plan.

23 specialist satellite refuge beds are now established across Suffolk following a successful bid for funds from the Ministry of Housing, Communities and Local Government. The satellite refuge provides sanctuary for victims fleeing domestic abuse who are not able to access refuge due to complex needs around mental health or substance dependency. In addition, funding has been secured from the Migrant Mitigation Fund, working alongside Norfolk County Council, to provide more extra refuge for victims with no recourse to public funds alongside immigration advice and support.

Funding has been pooled by partners across Suffolk to develop a countywide process for securing the homes of high risk victims of domestic abuse. The national charity Safe Partnership are now providing a service where they conduct a crime reduction and fire risk survey, gain landlord permissions, undertake any security and arson reduction measures all in one visit and within 24 hours of referral.

A programme of Multi-Agency Domestic Abuse training has been developed. This includes workshops on Female Genital Mutilation, Honour Based Violence and Modern-Day Slavery. Over 150 practitioners across Suffolk have been trained in the dynamics of domestic abuse including risk assessing and safety planning.

Funding has been agreed to establish a Domestic Abuse 'Champions Network' which will see a long term, sustainable solution to training which goes much wider than trusted professionals who champion DA as part of their paid role. This approach is deep rooted in the community encouraging early disclosure and early support for victims by upskilling as many people as possible to understand the signs and how to support a victim if they disclose.

There remains both a need and an aspiration to establish a Suffolk Domestic Abuse Co-ordination Centre which will map people through the system to ensure they get the right service. A funding application submitted to the Home Office VAWGMB Transformation Fund in early 2017 was unsuccessful. Since the initial bid to the Home Office, we have explored the potential of using existing resources/process in a different way to reduce the level of costs required to get the model up and running, this includes police resource from existing DA teams and Suffolk Multi-Agency Safeguarding Hub (MASH). In May 2018, Suffolk Public Sector Leaders agreed to fund £100,000 to help scope the detail of what the Co-ordination Centre will look like, how it will operate and quantify the resources required to make it a reality.

The Suffolk Domestic Abuse Partnership has become a mechanism where practitioners and partners can share best practice and coordinate a system wide response to Domestic Abuse. The Partnership has recently been widened to include partner organisations who provide support for victims of Sexual Violence and will be the place where all VAWGMB strands are discussed at an operational delivery level.

In-depth research has been conducted over the last two years to develop a better understanding of the effectiveness of services across the county. In the light of the research, Suffolk County Council (SCC) and the Police and Crime Commissioner (PCC) have identified that it is important that vulnerable individuals who are experiencing domestic abuse receive specialist support, and they are committed to ensuring services remain available to victims despite the current financial challenges. SCC and the PCC have agreed to work together to commission the Domestic Abuse Outreach Service and the Independent Domestic Violence Advisor Service which will commence following the conclusion of the current services in September 2018.

Monitor the impact of the delivery of the Emotional Health and Wellbeing Strategy.

It has been a period of national and local focus for the commissioning and provision of services for Children's Emotional Health and Wellbeing over the past 2 years. Suffolk Children's Emotional Health and Wellbeing Plan was reviewed and endorsed by the LSCB during 2017.

The plan had 10 priorities including the development of the Suffolk Emotional Health and Wellbeing Hub (single point of contact) which was launched in April 2018. The Hub ensures that no child, young person (0-25) or their family will be turned away without being offered the appropriate help, information or advice they need. The Hub sits within the MASH to provide a central co-ordinated response to all referrals. Having a school nurse within the Emotional Wellbeing Hub helps to support the school nurse team with their referrals.

Following the LSCB consultation with West Suffolk and Suffolk New College students, and in co-ordination with our engagement Hub colleagues, we have actively promoted a number of pathways to support young people and practitioners through our newsletters, network meetings and new website. This has proved successful and raised the profile of the support available.

These include:

- The new online **Emotional Wellbeing Gateway** which assists parents, carers and professionals who are worried about a child or young person's emotional wellbeing. The website includes:
 - o Information about emotional wellbeing support.
 - o Practical advice for parents and carers concerned about their child's mental health.

- A directory of local services to support children, young people, and families.
- **The Source** - a website for young people to access information, advice and guidance on issues they may face in their everyday lives.
- **Ask the Expert** (provided by Suffolk Young People's Health Project - 4YP) provides on line 1:1 support for young people (age 12-25), Monday to Wednesday, 5 - 7pm.
- **Chat Health** is a confidential text service for young people and families provided by the school nursing team Monday to Friday 9am – 4.30pm for help about a range of issues.

Drop ins remain accessible for all children as they continue to be offered in all secondary schools on a weekly basis. Those children identified as having emotional health and wellbeing concerns are placed on an emotional health and wellbeing pathway and a package of care is offered to the child.

Emotional health and wellbeing has continued to be the highest 'drop in' criteria over the past 6 months and this correlates to the evidence from Chat Health.

The CYP Engagement Hub held a well-attended Emotional Health and Wellbeing Festival in May 2018. The results and feedback from this will be included in next year's report.

The Emotional Health and Wellbeing of Suffolk young people continues to be a priority for the LSCB and is included in its priorities for 2018-19.

4. Other areas of focus and discussion for the LSCB over the past 12 months

Multi-Agency Risk Assessment Conference (MARAC) – The impact of the work of the SafeLives project of referrals to MARAC.

Feedback to LSCB meetings continues to raise concerns about the number of cases being referred to MARAC and the impact on partner resources. A strategic review of the Suffolk MARAC has taken place with the support of the national charity SafeLives. The review saw peer reviews take place for the three Suffolk MARAC area conferences along with a representative's questionnaire and a development afternoon.

The review highlighted a number of areas where efficiencies and improvements can be made, as well as identifying a need for training and strong governance. The MARAC Steering Group are progressing the recommendations of the review.

Number of MARACs involving children aged 0-18 in past 12 months – Broken down by area.

LSCB MARAC Data for period: April 2017 to March 2018								
Area	Total MARAC Cases Discussed	Year on year change	Cases involving children	As %	Year on year change	Total Children	Year on year change	Average children per case
Southern	901	↑ 13.76%	496	55.05%	↓ -0.09%	1003	↑ 9.14%	1.11
Northern	364	↑ 13.04%	203	55.77%	↓ -0.41%	401	↑ 13.60%	1.10
Western	818	↑ 10.69%	433	52.93%	↑ 4.40%	852	↑ 10.94%	1.04

The number of children who are Electively Home Educated (EHE)

Early in 2017 a concern was raised by Education colleagues about the continuing increase in the numbers of Electively Home Educated children and the support we can provide to them if they are not in mainstream schools, particularly those known to Social Care and Early Help teams.

An LSCB led thematic multi agency-audit of children who are electively home educated was undertaken which highlighted safeguarding concerns and worries for some children. The findings of the audit and joint work with Education and Specialist Services Team resulted in a multi-agency working group which has produced a new EHE Strategy and action plan. The EHE Strategy and action plan will be consulted on and revised in September.

Some of the key findings included:

- Closer working between the EHE consultants and Social Care and Early Help teams to ensure the child is safeguarded.
- The child's voice needs to be heard and considered throughout all EHE cases and the child's views, wishes and feelings need to be clearly recorded.
- Guidance, tools and support for assessing risk to be developed.
- If a home educated child has become a young carer, Social Work and Early Help managers need to recognise the need for a Young Carer's assessment.

This will provide additional safeguards for Electively Home Educated children in Suffolk.

Redevelopment of the LSCB website and newsletter

The LSCB website was completely redeveloped and launched in September 2017 to make it more accessible to non-professionals and easier to navigate. All the policies and procedures on the website were reviewed and updated.

The April 2018 website statistics show there were 34,240 visits to the LSCB website in total during the year April 2017 to March 2018. The average viewing time was 2 minutes 47 seconds. This is almost a 300% increase on the 13,300 visits in the previous 12 months and shows peoples increased awareness and confidence in the new site.

The LSCB newsletter was redeveloped and is now distributed electronically, is more partner focussed and is distributed to over 700 people.

The Prevent Duty and People Vulnerable to Radicalisation (VTR) in Suffolk

PREVENT is a part of the Government's counter-terrorism strategy that aims to stop people becoming terrorists or supporting violent extremism in all its forms. Suffolk has a duty to have "due regard to the need to prevent people from being drawn into terrorism". Suffolk work with partners to safeguard and provide support to individuals who have been identified as being at risk of radicalisation through a multi-agency panel called 'Channel'.

Suffolk Channel Panel meeting continues to be held every 4 weeks and is chaired by the Head of Safeguarding for CYPS. They discuss new referrals and manage existing cases for both children and adults. The Panel is recognised by the Home Office in the Eastern Region as being well established and is used as a good practice model.

Common themes from the Channel Panel in the past 12 months:

- Most referrals in Suffolk involve right wing extremism and racism.
- Fear of terrorism and the perceived threat to personal safety is a motivating factor for incidents leading to referral.
- Most referrals are for males aged under 18.
- Difficulty in obtaining consent from parents to their children working with Prevent and Intervention Providers.

What is working well?

- Established Channel meeting – good multi-agency attendance.
- Good take up of training across the partnership.
- Better links with Missing Co-ordinator for children.
- There is engagement with local mosques and faith institutions.
- Intervention providers continue to achieve positive outcomes with those referred to them.

What are we worried about?

- A more efficient process to identify who has undertaken training.
- NHS advice on gaining consent for Prevent referrals is contrary to the advice issued by the Home Office. This has been highlighted to the Home Office and they have agreed to address this nationally.
- Referrals may not be made as referrers are concerned that the threshold is not met.

Missing Children Annual Report

A recent Ofsted Inspection recognised that Suffolk's response to missing children has 'Significantly Strengthened'. There remains a robust and secure process for sharing missing information between police and CYPS and vice versa.

The majority of young people were missing or located within 24 hours and under. However, the number of missing children reported to the police has risen. 2017-2018 showed a rise in missing reports from 2487 episodes (for 776 individual children) in 2016-2017 to 2791 episodes this year relating to 807 individual children (increase of 31 individual children compared to last year).

Suffolk saw a reduction in repeat missing children over the past year. The majority of children were only reported missing once however, there have been more of these children compared to last year. 321 children were reported missing more than once in 2017-2018. This compares to 338 children reported missing more than once last year.

Suffolk has seen a slight rise in missing reports for Children in Care in Suffolk this year. Work is underway to alleviate this.

79% of missing children were already open to CYPS indicating we are directing our services at the right children.

Private Fostering Annual Report

The number of notifications had been reducing over the previous three years but stabilised and slightly increased this year to 43 from 39 in 2016/17.

YEAR	Notifications	New Arrangements	Total Number of Privately Fostered Arrangements
2014/2015	74	62	112
2015/2016	51	23	44
2016/2017	39	19	58
2017/2018	43	39	48

Whilst the reduction in the number of foreign language students coming to the UK has been maintained this year, and fewer have stayed for a full year, some of the arrangements are of concern and they have highlighted the problems of regulating Educational Guardianship companies. Advice has been sought from SCC's Legal Service, AEGIS (The Association for the Education and Guardianship of International Students) and DfE (Department for Education) as to how these arrangements could be managed differently but there is a consensus that the regulations are limited.

The LSCB has been supporting the proposals for raising awareness of Private Fostering in Suffolk following a report to explore options for increasing the number of Foster Carers. The Learning and Improvement Subgroup is supporting this initiative through the revision of information leaflets, the inclusion in safeguarding training across all agencies, ensuring it is embedded in the Designated Safeguarding Lead role in schools.

Local Authority Designated Officer (LADO) Annual Report

The number of LADO referrals for the past 12 months is broken down by area. This shows an increase across the South and West of the county, a decrease in the North, but with a rise overall. The number of those referrals which were judged to meet the threshold for LADO involvement is given in brackets.

This data confirms that an additional 31 LADO referrals were received in the year 2017/18 which is an increase of 3.7%. However, there was a significant split between the first 6 months of the year, during which the number of referrals dropped and the second 6 months during which numbers rose dramatically. In the second half of the year, 524 referrals were received in comparison to an average of just 391 referrals received in the previous 6-month period – this equated to a 34% rise over the period October 17 to March 18.

	North	South	West	TOTAL
2015-16	176 (106)	281 (222)	254 (208)	711 (536)
2016-17	194 (132)	355 (259)	278 (180)	827 (571)
2017-18	165 (100)	394 (266)	299 (198)	858 (564)

An increased knowledge of and confidence in the service is demonstrated by a steady rise in the number of referrals to the service and other feedback. This year has seen improved recording and tracking of cases through the system.

There is an incomplete picture of the organisations that do not refer sufficiently. The LADO service is targeting organisations underrepresented in terms of referrals to ensure that they are aware of LADO thresholds and processes.

HMIC Inspection of Probation Service and Community Rehabilitation Company

The Board received quarterly updates from both organisations on their action plans following their inspections the previous year. The Board were pleased to note the progress being made, particularly in relation to the quality and assessment of risk and management oversight.

Care Quality Commission Inspection report of Norfolk and Suffolk Foundation Trust (NSFT)

The Board received quarterly updates from NSFT Senior Managers. The Board were pleased to note the progress being made but also acknowledged that there are still areas for improvement which are included in the current action plan including backlogs in care planning and risk assessment.

The Board will continue to monitor progress as this is highlighted on the LSCB Risk Register.

Working with the Voluntary Sector - The first Community Action Suffolk (CAS) Safeguarding leads conference Autumn 2017

The LSCB and Safeguarding Adults Board were the keynote speakers at the conference and led multi-agency workshops focussing on making a referral, serious case reviews and quality assurance with voluntary sector colleagues.

Feedback from the first network meeting was very positive and all attendees wanted to continue with the conferences at least twice a year.

A further conference took place in July 2018, with a focus on e-Safety, the role of the MASH and self-neglect and hoarding. Over 30 organisations were represented.

Parish and Town Councillors Safeguarding Event

The LSCB and Safeguarding Adult Board (SAB) in conjunction with Suffolk Association of Local Councils (SALC), Mid Suffolk and Babergh District Council and West Suffolk Borough Council delivered a successful safeguarding conference attended by 21 Parish and Town Councillors.

The Councillors received a comprehensive introduction to safeguarding and presentations on the role of the MASH, self-neglect and hoarding and the importance of having a safeguarding lead and a safeguarding policy. 85% of participants rated the quality and content of the conference as 'Excellent' or 'Good'. Evaluation forms show that participants were much clearer about their role, the signs and symptoms of abuse and neglect and how to make a referral.

Suffolk Serious Case Reviews (SCRs)

The LSCB published one serious case review in the past 12 months. This related to a young person Child in Care who was subject to neglect. The report was signed off by the LSCB Board in January 2018 and it was agreed with DfE that Suffolk would not publish the case to protect the identity of the young person, who is still an open case as it would be detrimental to their wellbeing.

There were a number of learning points recommendations from the report, the most significant of which were:

- Statutory processes for Children in Care were not always fulfilled.
- Every agency and all foster carers need to understand the statutory requirements for Children in Care to be seen alone.
- The lack of recording of the male foster carer involvement with the young person.
- There needs to be appropriate challenge to the views and opinions of foster carers.
- Generalisations were viewed as fact and not evidence based.
- The balance of influence and power between the professionals was not always appropriate.

A detailed programme of learning events were run by the LSCB team, to embed share and embed the learning from the case. This included briefings for:

- CYP Directorate Management team, Specialist Services, Early Help, Fostering management teams.
- Independent Reviewing Officers and Local Authority Designated Officers.
- 12 x Countywide sessions for multi-agency frontline practitioners attended by 247 frontline staff.

The learning from this case now forms part of standard safeguarding training across the partnership, including Schools Choice who deliver training to most Suffolk schools and governing bodies.

The Learning and Improvement Subgroup continue to monitor the Young Person F Action Plan and will seek assurances from partners that the recommendations are embedded in practice.

An anonymised summary of the learning from this case will be included on the NSPCC serious case review website.

Independent Schools Forum

Suffolk LSCB continues to lead the way in engaging with its Independent and Private schools across the county. This work was recognised by the Independent Schools Inspectorate.

Chairmanship of the group has been passed to an Independent school Headteacher but the LSCB, Schools Choice and Workforce Development remain actively involved with the forum.

There has been one Independent School's forum in 2017 attended by 16 Designated Safeguarding Leads. The focus of the 2017 forum was to update the schools on the safeguarding training requirements for schools and DSLs, to explore the changes to "Keeping Children Safe in Education", to update them on the LSCB policies and procedures and to look at the new safeguarding record keeping guidance for Suffolk schools.

Cafcass (Children and Family Court Advisory and Support Service) - Ofsted inspection report.

Earlier this year Ofsted carried out a national inspection of Cafcass. The inspection took place over a period of 4 weeks, and the outcome was a grading of outstanding.

Ofsted found that Cafcass' case work was a strong Good, with elements of outstanding. Ofsted found local and national leadership to be outstanding. Ofsted found that the work of Cafcass was safe, and that as an organisation, we start and finish with the child. But of course, it doesn't end there. In the words of the Chief Executive, Anthony Douglas "We must now move to the next level. The next level is always the next child and working to ensure she or he gets an outstanding service from us."

5. How the LSCB subgroups have supported outcomes in 2017/18

A significant amount of the LSCB's work is channelled through its subgroups who ensure that the full range of work is undertaken. These subgroups each report to the Board twice a year.

Below is a summary of the key work undertaken by these groups over the past 12 months.

5.1 Child Exploitation (CE) Strategic Subgroup

Most of the work of this group is covered in Section 2 – What have we done to meet our priorities, Monitoring the impact of the Child Exploitation Action Plan.

The Child Exploitation Action Plan has been widely shared and endorsed by the LSCB. Below are some of the key achievements during the past 12 months:

Policy and Procedure

Privately Fostered Children policy and guidance has been approved and added to Workforce Development training. A mailbox has been created to ensure the Local Authority is notified of all unofficial school exclusions to allow for monitoring. The Electively Home Educated Strategy developed and published in January 2018.

Missing Children

The Missing Co-Ordinator and Make a Change Co-Ordinator have delivered awareness training to all teams across Social Care and Early Help. Development of awareness training for the voluntary sector, practitioners and foster carers, delivery late in 2018. Engagement work underway with Children's Homes across the county to develop better strategies to prevent missing episodes. Police Safe and Well checks have been subject to review and new guidance developed and delivered to all frontline officers.

Education

Process for reporting children missing to police by school staff created, cascaded and implemented across Suffolk schools via 'Suffolk Headlines'. Children Missing Education team reviewed procedures for those children on part-time timetables. Data to be gathered regarding these children and the schools to ascertain if additional resources or support is required.

5.2 Learning and Improvement (LIG) Subgroup

The multi-agency LIG subgroup meets monthly. Its focus is cross-partnership audit, scrutiny and the monitoring of an extensive range of performance information.

These include annual reports covering:

- Local Authority Designated Officer (LADO) activity
- Private Fostering
- Missing Children
- Workforce Development Safeguarding Training
- Schools Choice Designated Lead and Governor Training
- Private Fostering
- Keeping Children Safe in Education – Schools Safeguarding
- Child Death Overview Panel
- Prevent and Vulnerable to Radicalisation
- Online Safety

Some of the key areas of audit work covered by the Learning and Improvement Subgroup in the past 12 months:

Agency Participation at Initial Child Protection Conferences and Review Child Protection Conferences

The Learning and Improvement Subgroup has been monitoring agency participation at Initial and Review Child Protection Conferences following concerns about attendance. This has been monitored since May 2017 through audit and reporting by Child and Young People's Service (CYPS).

Non-attendance trends occurring in school nursing and midwifery in the west of the county. Schools and Early Education providers were also showing repeated non-attendance.

The most recent report showed attendance had improved and was working well for CYPS, Health Visitors and Children Centres. LIG has asked for school attendance to be monitored through the Section 157/175 safeguarding audit tool and through Governor training and support. The recent report highlighted a significant drop in police attendance.

These trends will continue to be monitored, reported to Board and brought to the attention of the relevant partners.

Achieving Best Evidence (ABE) Interviews

There was a concern regarding the lack of CYP involvement in ABE interviews, particularly the low numbers of social workers leading on ABE interviews. A 'dip sample' showed that CYP had only led on two out of 100. LIG have also looked at the concerns regarding the increase in numbers of external intermediaries being used by Police for ABE interviews rather than social workers and the need to increase the confidence of social workers in undertaking ABEs. A joint protocol for ABE interviews is being developed by CYP Quality Assurance team and LIG have asked that Police and CYP meet to resolve the concerns regarding ABE interviews. This continues to be monitored at LIG who await the joint protocol.

SafeLives 'One Front Door' - Domestic Abuse Project

LIG has been monitoring work of SafeLives as they continue to support the delivery of the 'One Front Door' pilot project with Suffolk Multi-Agency Safeguarding Hub (MASH). The project aims to identify and safeguard vulnerable individuals at risk of domestic abuse at the earliest opportunity; creating an integrated pathway and response for all safeguarding concerns for individuals and whole families.

Thematic Audit – looking at cases where families are not engaging, and cases are closed

An action from the LSCB Baby 'E' Serious Case Review in 2017, highlighted the need for the LSCB to undertake a thematic audit of Early Help cases closed due to disengagement of the family.

Revised Early Help service processes and procedures are being implemented as a result of the audit. LIG made a number of recommendations and are monitoring these and the action plan. Some of the findings are summarised below:

- Where teams are considering closing a case due to disengagement, the views of parents and the views of children and young people about the closure of the case will be sought and recorded before closure.
- Workers will liaise with, and seek the views of, key professionals including the assessor in cases before closure.
- Management oversight/supervision recordings must show the reflective discussion, analysis and rationale that has taken place with the worker before considering closure.

Statutory Partners Section 11 (Children Act 2004) – Annual Safeguarding Audits

Suffolk’s statutory partner agencies complete the full Section 11 audit questionnaire, comprising of nine sections with supporting evidence, every three years and then an annual review of the safeguarding processes, procedures and practice. Non-statutory partners can also use the audit tool as a self-review tool. The Diocese of St Edmundsbury and Ipswich and the East of England Ambulance Service are the current non-statutory partners who chose to complete the tool.

The Section 11 Audit comprises of 9 sections:

- A commitment from senior manager to the importance of safeguarding.
- Ensuring a statement of the agency’s responsibilities towards Children and Adults is available to all staff.
- Ensuring there is a clear line of accountability.
- Ensuring that the views of children adults and families are sort to develop and monitor services.
- To ensure safeguarding training is current and follows national and local guidance.
- Recruitment, vetting procedures and allegations.
- Interagency working.
- Information sharing.
- Commissioned Services.

Changes to the Section 11 Audit for 2018

The audit process was revised in early 2018 to reflect the amalgamation of the LSCB and the Safeguarding Adults Board (SAB) and include the Signs of Safety and Wellbeing (SOS) practice model. The audits now include questions on vulnerable adults, Care Act, self-neglect and hoarding and making safeguarding personal. This will be further developed in 2018.

The audit uses Signs of Safety methodology “what is working well, what are we worried and what needs to happen” practice model. Partners are also asked to scale their practice through the 9 sections on a scale of 0-10 where 0 means there are limited safeguarding arrangements in place and 10 means there are robust arrangements.

There was 100% engagement of Suffolk Partners in the Section 11 Process in 2017/18.

Statutory Partners	Date to L&I Group	Type of Audit	Next Full S11 Audit Date
Health – Combined	Jan 2018	Full	Jan 2021
Health – Primary Care	Jan 2018	Review	Jan 2019
Health – NHS England	April 2018	Full	April 2021
Suffolk County Council	Feb 2018	Full	Feb 2021
Mid Suffolk/ Babergh District Council	April 2018	Full	April 2021
West Suffolk District Council	May 2018	Full	May 2021
Ipswich Borough Council	May 2018	Review	May 2020
Suffolk Coastal/ Waveney District Council	April 2018	Full	April 2021
Norfolk and Suffolk Probation Service	July 2018	Full	July 2021
Norfolk and Suffolk Community Rehabilitation Company	March 2018	Full	March 2021
Suffolk Constabulary	Dec 2017	Review	Dec 2020

Non-Statutory Partners			
Eastern Ambulance Service	July 2018	Full	July 2021
Diocese of St Edmundsbury and Ipswich	March 2018	Review	March 2019

Summary of the main findings from the Section 11 Audits in 2017-18

What is working well?

- Partners liked the new SOS format and scoring, it was easy to use the tool.
- Joining up with adults safeguarding saves time and effort.
- Positive involvement of GPs in the process.
- Partners are ensuring that commissioned and contracted services are as robust as their own.
- Work with taxi drivers to raise awareness of Child Exploitation.

What are we worried about?

- Some variation in the scoring across the partners, resulting in mediation.
- Risks identified with the implementation of the new Liquid Logic system – on LSCB Risk Register.
- No Designated Safeguarding Doctor in Suffolk.
- Sharing of the LSCB Professional Disputes and Escalation policy across partners

What needs to happen next?

- Further development of the audit, renaming it to be a Safeguarding Health Check with a review of the questions for Adult Safeguarding.

5.3 Policy, Planning and Engagement (PPE) Subgroup

LSCB policies and procedures have been reviewed and either updated or re-written as part of the migration to the new LSCB website, launched in September 2017. There was a 300% increase in the number of visits to our policies and procedure pages which implies an increased awareness and confidence from partners.

Policies updated and approved in the past 12 months include:

- Concealed Pregnancy.
- Escalation Policy – to help resolve professional disputes.
- Working with Hard to Engage Families.
- New Threshold Guidance.
- Threshold Guidance for children with a disability.
- Honour based abuse, Forced Marriage and Female Genital Mutilation Guidance.
- Review of Safer Recruitment Guidance and Safeguarding Employment Standards.
- CAF Policy.
- Safeguarding Children who go Missing from Home or Care and Missing Families where there are concerns for children or unborn children.
- USAF Protocol – a protocol for referrals, information sharing and case work with colleagues from the US Airforce in the West of the county.
- Non-mobile infant leaflet – to help identify potential signs of abuse in non-mobile infants.

5.4 Child Death Overview Panel (CDOP)

Suffolk CDOP continues to monitor the trends in child deaths in Suffolk and the average number of deaths are showing downward trend mirroring national and regional trend. CDOP relies on information provided by each single agency involved in the life of a child to understand what led to the death and what could be done to prevent similar cases in future.

The panel met 5 times and reviewed 27 cases over the past twelve months. There was an increase in the number of deaths that have occurred outside of the county. As a result of the reviewed deaths, CDOP made recommendations to partners and followed up implementation of agreed actions to ensure further prevention. For example, during this reporting period CDOP contacted the General Optical Council, Fitness to Practice team to ensure planned learning is delivered following the conviction of an optometrist for manslaughter by gross negligence.

Also, following the drowning of a 7-year-old child whilst attending a private pool party, CDOP contacted South Norfolk District Council to ensure planned training is delivered for private pools and prevention messages are conveyed to public through CDOP newsletters.

The Safer Sleeping Suffolk Strategy, with 6 key campaign messages, is still ongoing which is intended to provide consistent, simple, straight forward, evidence informed advice as a starting point for discussion with parents. Suffolk CDOP also are monitoring the use of Baby Boxes in Suffolk following concerns raised nationally that some may not meet British Safety Standards.

5.5 Case Review Panel

During 2017/18, the Case Review Panel reviewed five cases:

Case 1 - Allegations of rape and sexual abuse made by a Suffolk young person in a neighbouring county. A comprehensive report was compiled, the learning discussed, and recommendations actioned. CYP Quality Assurance team has subsequently undertaken an audit as an outcome of this learning.

Case 2 - The abduction and sexual assault of a young person. There were parallel criminal proceedings which concluded in a conviction. Learning points were identified and have been cross referenced with learning from the Baby E serious case review.

Case 3 - A young person with physical and mental health difficulties. It was agreed the case met the criteria for a multi-agency partnership review due to a lack of an integrated plan across agencies. This will be finalised in Summer 2018.

Case 4 - A baby suffered significant harm. The incident was raised as Serious Incident Review, a root cause analysis report was produced by Health colleagues. An action plan which was monitored through the LSCB Learning and Improvement Group.

Case 5 - The death of a child due to an asthma attack in similar circumstances to a sibling previously. It was considered, and the West Suffolk Hospital Paediatric Consultant put the case forward to the National Review for Asthma Deaths and asthma management. There was no evidence that abuse or neglect played a part in this death.

The Case Review Panel also discussed a number of other cases including some where there were examples of good practice. The Case Review Panel work effectively and continues to review its approach to how it reviews cases that don't meet the threshold for serious case review.

5.6 Area Safeguarding Network Groups (ASNGs)

The commitment to the ASNGs by partners continues to be positive. The meetings are mostly well attended with all participants reporting positively on the benefits to them.

The combination of the LSCB strategic agenda alongside local practice issues works well. The meetings now include a section on children at risk of exploitation, which is proving useful and gives practitioners an insight into countywide and local issues.

In the West, the inclusion of representatives from RAF Honington and USAF Lakenheath give representation from the significant military population, allowing the sharing of information with multi-agency partners.

What is working well?

- Attendance and commitment to these meetings remains good and has improved.
- The decision to integrate and link disparate meetings is welcomed by participants.
- Valuable sharing of common issues via the networking opportunities provided by formal participant feedback on the matters of importance to them.
- A shared and visibly strong commitment to working jointly on delivering a joined-up approach to safeguarding.

What are we worried about?

- That any changes to the structure of the LSCB will not detract from the positive view held by partners of the ASNGs .
- Attendance from some statutory partners.
- An area of focus for 2018 is to measure the impact of the area network meetings and ensure these feed into Board meetings.

5.7 Online Safety Subgroup

The group continues to be chaired by Cllr. Gordon Jones, Cabinet Member for Children's Services, Education and Skills. The LSCB contributed £2k of it's budget to the annual online safety Cyber Survey.

The group developed a simple strategy entitled the Digital Strategy 2020 which is in place and reviewed and updated as appropriate each meeting. The strategy is informed by the Cyber Survey which is conducted annually.

The strategy has three aims:

- Maintain awareness of online safety as part of a safeguarding approach.
- Support the development of online safety resilience and digital literacy skills.
- Leverage the resources and skills of partners to improve access to digital opportunities and social connectivity for the most vulnerable in society.

What is working well?

- An established strategic group with wide multi-agency representation.
- Data collection from the MASH informs e-safety risk factors.
- The cyber survey is now in its 7th year and it shows that the actions informed by the results of the survey are having an impact.
- Children are listening to, and valuing what their parents and carers are telling them about keeping safe online and continuing to listen as they grow up.

- Annual Online Safety Conference. This year's Conference was attended by 142 delegates representing primary and secondary schools, statutory and non-statutory organisations and third sector charities. Feedback from the Conference was excellent.

What are we worried about?

- Are we still seeing online safety as a separate issue? We need to envisage that by 2020, Suffolk will become a place where online safety awareness will be embedded into everyday life and service delivery.
- The Cyber Survey this year has highlighted that 15-year olds are taking more risks than any other age group.
- The survey also tells us that it is the content being viewed rather than the time spent online that is harmful.

5.8 Health Operational Subgroup

This group meets quarterly and has representatives from across the health landscape in Suffolk.

What is working well?

- Health Subgroup continues to monitor the actions from Case Reviews through the Designated team.
- The MASH Health team are fully staffed (at time of writing).
- Domestic Abuse Nurses in both Acute Trusts are now in post and fully operational.
- Leaflet for Unexplained Marks for Non-Mobile Babies has been developed.
- NICE guidance Child Abuse and Neglect (NG76) has been presented at the Health Safeguarding Groups and at each provider organisations safeguarding committee. Compliance with the standards to be monitored through safeguarding committees.

What are we worried about?

- MARAC continues to have a high number of referrals resulting in increased workload for those providing health information. MARAC Steering Group continues to seek safe ways of reducing cases referred.
- Designated Doctor post remains vacant.
- Looked after Children - Initial Health Assessments (IHA's). Slow improvement in IHA's completed within statutory timescales.

6. What we plan to do – LSCB Priorities for 2018-19

The Board have agreed the following priorities for the twelve months to April 2019.

We will continue our **core business**:

1. Continue to evaluate the effectiveness of safeguarding provision across the LSCB partnership through a range of performance reports and audits.
2. Ensure that learning from case reviews and the child death overview panel is effectively shared, monitored and embedded in practice.
3. Effective working across the key strategic boards, in particular the SAB, Corporate Parenting Board, HWBB and SSCGs.
4. Ensure that partners are well placed to deliver their strategic safeguarding arrangements in line with the expected government guidance, changes to legislation and organisational change.
5. Ensure that the views of young people and families influence safeguarding provision across Suffolk.

Our **specific priorities for 2018-19** are:

6. Develop the multi-agency safeguarding arrangement in line with Working Together 2018 to be in place by July 2019.
7. Lead the delivery of the Child Exploitation action plan across Suffolk. This will recognise the impact of the multi-agency response to the County lines and gangs and groups in Suffolk.
8. Monitor the effectiveness of the Violence against women and girls, men and boys (VAWGMB) strategy and its impact on domestic violence in Suffolk.
9. Monitor the safeguarding risks of children not in appropriate full-time education.
10. Continue to monitor the impact of the delivery of the Emotional Health and Wellbeing strategy.
11. Develop a robust Neglect Strategy and monitor its implementation and impact.

7. Safeguarding Training in Suffolk

Suffolk Local Safeguarding Children Board has a statutory responsibility to ensure that appropriate safeguarding training is provided in Suffolk and that it meets local needs. Working Together states that LSCBs should '*monitor and evaluate the effectiveness of training, including multi-agency training, to safeguard and promote the welfare of children*'.

LSCB Online training for Introduction to Safeguarding

The LSCB continues to provide an online system for introduction to Safeguarding from an external provider, ME Learning. This system has been used by over 500 new users in the past 12 months. It provides easy to use access to basic safeguarding training across the multi-agency partnership.

This system has ensured that many people who are unable or unwilling to access face to face training have been able to complete the basic introduction to safeguarding.

This year the LSCB have purchased additional modules to help meet our priorities e.g. Child Exploitation.

The 31 modules available on ME learning now include:

- Child Sexual Exploitation Level 1
- Child Sexual Exploitation Level 2
- E-Safety - Risks to Children
- Gangs and Youth Violence
- Modern Slavery and Human Trafficking
- Neglect
- Safeguarding Children with Disabilities
- Self-Harm
- The Prevent Duty

These additional modules ensure Suffolk are responding to current priorities and drivers.

Multi-Agency Safeguarding Training – Level 3 Working Together

The LSCB have been instrumental in instigating a review of the Level 3 Working Together safeguarding training programme.

The LSCB Professional Advisor attended Level 3 safeguarding courses in Essex and Norfolk to find out how regional partners were delivering the same training and to gather new ideas to refresh the programme. A multi-agency working group was formed and included social care practitioners, managers and school reps. The group have reviewed the training with the CYP Workforce Development team and a more casework based training programme is now in place.

The LSCB will continue to monitor how partners know that the right people are receiving training and how partners are measuring the impact of training on practice.

Appendix 10.5 details the courses run by Workforce Development colleagues over the past 12 months. The breadth of courses has increased significantly.

8. Board Structure and Governance

8.1 The Structure of Suffolk LSCB and its partnerships

There is a three-tiered structure to the Suffolk Board. The main Board, providing a clear strategic lead, and an Executive group that meets 8 times a year [pre-and post-Board meetings] and drives forward the business and operation of the LSCB.

The Executive Group develops and agrees the agenda for Board meetings, commissions work required for meetings and ensures that before items are taken to the Board clear solutions and/or proposals have been formulated.

A series of subgroups report to the main Board. (See the subgroup structure chart in Appendix 10.1).

For further, more detailed information on structure and governance:

- Board levels of membership – See Appendix 10.2
- List of Board Members – See Appendix 10.3

9. LSCB Budget and Expenditure

It was agreed in 2017 that the partner contributions to the Board would remain the same as previous years. The contributions were as follows:

2017/18 Partner contributions to LSCB Budget:	Income at 1 April 2017
Babergh District Council	5,000
Forest Heath District Council	5,000
Ipswich Borough Council	5,000
Mid Suffolk District Council	5,000
Suffolk Coastal District Council	5,000
St Edmundsbury Borough Council	5,000
Waveney District Council	5,000
Suffolk County Council	100,865
Cafcass	550
Suffolk Constabulary	23,500
Suffolk CCGs	47,000
Norfolk and Suffolk CRC	2,500
Norfolk & Suffolk Probation	2,100
Other Income – Training contribution	50
Income 2017-18:	£211,565

Expenditure for the year to 1 April 2018 was as follows:

Expenditure 2017-1	Estimated Expenditure	Expenditure as at 21st March 2018
Salaries	163,000	158,296
Transport Related Expenses	1,000	1,463
Supplies and Services:		
Professional Services Chair LSCB	24,000	18,171
Printing	3,500	570
Room Hire & Hospitality	2,000	664
Website development	5,000	4,020
IT Consumables	0	90
Staff Training & Conferences	0	726
Serious Case Review	28,000	3,058
Grants to Organisations – AILC	1,500	1,500
ME Learning Licence	6,500	6,410
Chronolator Licence	0	1,240
MACIE Development	2,000	0
Miscellaneous	0	30
Awareness raising, training and workforce development resulting from programmes <ul style="list-style-type: none"> • Cyber Survey • County Lines 	10,000	2,000
Internal Charges	100	17
Overall spend:	246,600	198,255
Income:	211,565	211,565
Balance	£35,035 Overspend	£13,310 Underspend

Main points to note at 1 April 2018

- The biggest underspend was on Serious Case Reviews as only one was completed during the year and the LSCB only used an external overview writer for 50% of the review.
- It was agreed by the LSCB Executive Group to refund 50% of the reserves to partners, apportioned according to their contribution (see later table). It was felt prudent to keep contributions to the same level and refund rather than adjust future contributions.

LSCB Reserves at 1 April 2018

- £165,694 - brought forward at 31 March 2017
- £13,310 - underspend for 17-18
- £179,004** - carried forward to 2018-19

The estimated budget for the year 1 April 2018 – 1 April 2019.

Estimated Budget 2018-19	Estimated Expenditure £	Income £
Partner contributions		211,515
Salaries Including (Board Manager salary 50%)	136,300	
Transport Related Expenses	1,500	
Supplies and Services:		
Professional Services Chair LSCB	25,000	
Printing	1,000	
Room Hire & Hospitality	1,000	
Website development	1,200	
Staff Training & Conferences	1,000	
Serious Case Reviews	25,000	
Grants to Organisations – AILC	1,500	
ME Learning Licence	7,000	
Awareness raising, training and workforce development resulting from programmes	10,000	
Working together 2018 developments	10,000	
Estimated spend: Draw on reserves at 1 April 2019	£220,400 (8,885)	£211,515

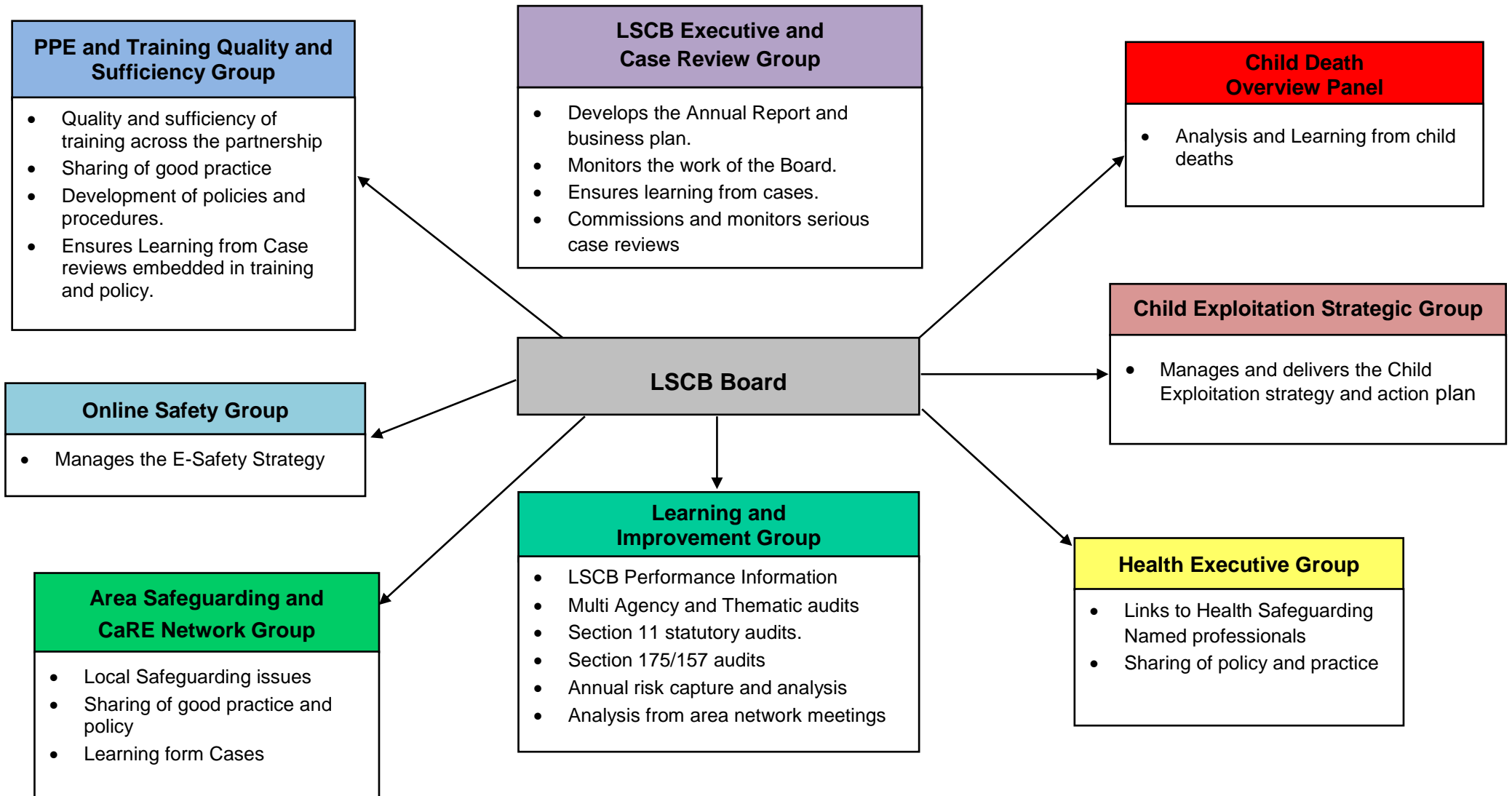
Reserves at 1 April 2018	£179,004
50% refunded to partners	£90,000 (see table below)
Balance carried forward	£89,004

Estimated draw at 1 April 2019	£8,885
Estimated reserves at 1 April 2019	£80,119

Partner agency	Contribution	Overall %	Refund from £90k reserves.
Babergh District Council	5,000	2.36%	£2,127
Forest Heath District Council	5,000	2.36%	£2,127
Ipswich Borough Council	5,000	2.36%	£2,127
Mid Suffolk District Council	5,000	2.36%	£2,127
Suffolk Coastal District Council	5,000	2.36%	£2,127
St Edmundsbury Borough Council	5,000	2.36%	£2,127
Waveney District Council	5,000	2.36%	£2,127
Suffolk County Council	100,865	47.68%	£42,930
Cafcass	550	0.26%	£234
Suffolk Constabulary	23,500	11.11%	£9,997
Suffolk CCGs	47,000	22.22%	£19,994
Norfolk and Suffolk CRC	2,500	1.18%	£1,063
Norfolk & Suffolk Probation	2,100	0.99%	£893
	£211,565		£90,000

10. Appendices

Appendix 10.1 - Suffolk Local Safeguarding Children Board – Subgroup Structure



Appendix 10.2 - Levels of Membership of Suffolk LSCB

There are four levels of membership for Suffolk LSCB as agreed within the constitution:

Full Members

Partners with a statutory duty to co-operate or where the Board considers membership to be essential:

- Independent Chair
- Director of Children's Services SCC
- NHS Commissioning Board, Trust Hospitals and clinical commissioning groups
- Chief Officer of Police – Suffolk Constabulary
- NHS Trusts and Foundation Trusts (including Ambulance Service)
- Norfolk and Suffolk Probation Trust
- Norfolk and Suffolk Community Rehabilitation Company
- District and Borough Councils [1 representative]
- Senior Officer, Adult Social Care, SCC

Standing Members

Will include representatives of agencies which do not have an obligation under statute but are full members and expected to attend all meetings. They will include:

- Representatives from education (including Independent schools)
- Lay members
- Representative from the voluntary sector
- Fire Service

Associate Members

Not full Board Members with 'voting rights' but would receive all papers and can request items to be included on the agenda or attendance at a particular Board meeting by arrangement through the LSCB Manager. Associate Members can become a member of any subgroup other than Executive Group and are expected to attend at least one meeting per year and update the Board on their agency/organisation.

Professional Advisors

Partners providing a range of professional or technical advice on a fixed or periodic basis: The LSCB should be able to draw on appropriate expertise and advice from the relevant sectors. This includes a designated doctor and nurse.

Appendix 10.3 - List of Board Members

Suffolk Board Membership as at April 2018

Sue Hadley	LSCB Independent Chair
Paul Nicholls	LSCB Manager
Tracy Murphy	LSCB Professional Advisor
Rachel Roshier	LSCB Business Support Co-ordinator [Minute Taker]

Suffolk County Council - Children's and Adult's Services

Allan Cadzow	Interim Director for Children and Young People	Full Member
Cllr Gordon Jones	Cabinet Member for Children's Services	Associate Member
Balwinder Kaur	Northern Area Director Safeguarding Adults Lead	Full Member
Allison Hassey	Head of Safeguarding and Reviewing Officer Service	Full Member
Janice Lee	Strategic Lead, Resolution Education and Learning	Standing Member
Codrutza Oros-Marsh	Head of Quality, Engagement and Professional Development ACS and CYP	Associate Member

Suffolk County Council - Other Departments

Dr Mash Maidrag	Consultant in Public Health Medicine, Public Health	Full Member
Ken Williamson	Area Commander, Suffolk Fire and Rescue	Standing Member
Sharon Jarrett	Head of CYP Health Improvement and Sexual Health, Public Health	Associate Member

Countywide Health Services

Cindie Dunkling	Designated Nurse Suffolk - NHS Suffolk: West Suffolk, Ipswich and East Suffolk CCGs	Full Member
Saranna Burgess	Head of Patient Safety and Safeguarding, Norfolk and Suffolk NHS Foundation Trust	Full Member
Rebecca Hulme	Chief Nurse, Health East (Great Yarmouth and Waveney CCG)	Full Member
Julia Hunt	Acting Director of Nursing, James Paget University Hospital	Associate Member
Lisa Nobes	CCG Chief Nursing Officer - NHS Suffolk: West Suffolk, Ipswich and East Suffolk CCGs	Full Member
Rowan Procter	Executive Chief Nurse, West Suffolk NHS Foundation Trust	Full Member
Mavis Spencer	Deputy Director of Nursing, NHS England East	Full Member
Claire Thompson	Interim Director of Nursing and Quality, Ipswich Hospital NHS Trust	Full Member

Jonathan Williams	Director of Quality and Assurance, East Coast Community Healthcare	Associate Member
-------------------	--	------------------

Glen Young	Senior Locality Manager (West Suffolk), East of England Ambulance NHS Trust	Full Member
------------	---	-------------

Education

Alison Bowman	Governor representing Suffolk Governor's Forum	Standing Member
---------------	--	-----------------

Amanda Childs	Head Teacher, Ipswich Preparatory School, representing Independent Schools	Standing Member
---------------	--	-----------------

Danielle Clarke	Head teacher, St Joseph's College, representing Independent Schools	Standing Member
-----------------	---	-----------------

Darron Jackson	Head Teacher, Gorseland Primary School representing Suffolk Primary Head teachers	Standing Member
----------------	---	-----------------

Jan Hatchell	Head Teacher, Riverwalk School representing Suffolk Special Schools	Standing Member
--------------	---	-----------------

Nikos Savvas	Principal, West Suffolk College representing Higher Education	Standing Member
--------------	---	-----------------

Madeleine Vigar	Executive Director of SASH, Suffolk Association of Secondary Headteachers	Standing Member
-----------------	---	-----------------

Suffolk District & Borough Councils

Kathy Nixon	Interim Strategic Director, Babergh and Mid Suffolk District Councils - Working Together	Standing Member
-------------	--	-----------------

Agencies linked to Criminal Justice

Charlotte Belham	Senior Operational Manager, National Probation Service	Full Member
------------------	--	-------------

Eammon Bridger	Detective Superintendent, Protecting Vulnerable People, Suffolk Constabulary	Full Member
----------------	--	-------------

Vincent Callaghan	Senior Service Manager, Norfolk & Suffolk Cafcass	Full Member
-------------------	---	-------------

Tim Passmore	Police and Crime Commissioner, Suffolk Constabulary	Associate Member
--------------	---	------------------

Jo Rusby	Deputy Director, Norfolk & Suffolk Community Rehabilitation Company Ltd	Full Member
----------	---	-------------

Voluntary Sector

Christine Abraham	Director of Services, Community Action Suffolk representing Voluntary CYPS Sector in Suffolk	Standing Member
-------------------	--	-----------------

Lay Members

Sara Benstead	Community Lay Person	Standing Member
---------------	----------------------	-----------------

Andrew Peck	Community Lay Person	Standing Member
-------------	----------------------	-----------------

Appendix 10.4 - Members attendance over the past twelve months

Organisation	Meeting Dates				
	Apr-17	Jul-17	Oct-17	Jan-18	Apr-18
LSCB Independent Chair	Yes	Yes	Yes	Yes	Yes
LSCB Board Manager	Yes	Yes	Yes	Yes	Yes
LSCB Professional Advisor	Yes	Yes	Yes	Yes	Yes
Interim Director for Children and Young People's Services, Suffolk County Council	Yes	Yes	Yes	Yes	Yes
Cabinet Member for Children's Services	No	Yes	No	No	Yes
Northern Area Director, Safeguarding Adults Lead, Adult Community Services, Suffolk County Council	Yes	Yes	No	Yes	No
Head of Safeguarding & Reviewing Officer Service, CYPS, Suffolk County Council	Yes	Yes	Yes	Yes	Yes
Strategic Lead, Resolution Education and Learning	Yes	Yes	Yes	Yes	No
Head of Quality, Engagement and Professional Development ACS and CYP	-	-	Yes	Yes	No
Consultant Public Health, Public Health, Suffolk County Council	Yes	No	No	No	No
Area Commander, Suffolk Fire and Rescue	Yes	No	Yes	Yes	Yes
Head of CYP Health Improvement and Sexual Health, Public Health	No	No	No	No	No
Designated Nurse Suffolk, West Suffolk (CCG): Ipswich & East (CCG)	No	No	Yes	Yes	Yes
Head of Patient Safety and Safeguarding, Norfolk & Suffolk NHS Foundation	No	Yes	Yes	Yes	Yes
Chief Nurse, Health East (Great Yarmouth & Waveney CCG)	Yes	Yes	Yes	Yes	Yes
Director of Nursing, James Paget University Hospital	No	No	No	No	No
Chief Nursing Officer and Director of Patient Safety & Clinical Quality, NHS Suffolk, West Suffolk, Ipswich & East Suffolk (CCG's)	No	Yes	Yes	Yes	Yes
Executive Chief Nurse, West Suffolk Hospital Foundation Trust	Yes	yes	No	Yes	Yes
Deputy Director of Nursing, NHS England (East Anglia Area Team)	No	No	No	No	No
Director of Nursing and Quality, Ipswich Hospital NHS Trust	Yes	Yes	Yes	Yes	Yes
Designated Doctor, Suffolk, West Suffolk CCG & Ipswich & East Suffolk CCG	Post Vacant	Post Vacant	Post Vacant	Post Vacant	Post Vacant
Director of Quality and Assurance, East Coast Community Health care	No	No	No	No	No

Meeting Dates

Organisation	Apr-17	Jul-17	Oct-17	Jan-18	Apr-18
Senior Locality Manager, East England Ambulance NHS Trust	No	No	No	No	No
Director of Nursing & Quality, Ipswich Hospital NHS Trust	Yes	Yes	Yes	Yes	Yes
Governor representing Suffolk Governor's Forum	No	Yes	Yes	No	No
Head Teacher representing Independent Schools	No	Yes	Yes	Yes	Yes
Head Teacher representing Primary Schools	No	No	Yes	Yes	No
Head Teacher representing Special Schools	No	No	No	Yes	Yes
Principle representing Higher Education	Yes	Yes	Yes	Yes	Yes
Executive Director of Suffolk Association of Secondary Head Teachers	No	No	Yes	No	Yes
Senior Operational Support Manager, National Probation Service	Yes	Yes	Yes	Yes	Yes
Detective Superintendent, Protecting Vulnerable People, Suffolk Constabulary	Yes	Yes	Yes	Yes	Yes
Senior Service Manager, Norfolk & Suffolk Cafcass	No	No	No	Yes	Yes
Police and Crime Commissioner, Suffolk Constabulary	No	No	No	No	No
Deputy Director, Norfolk & Suffolk Community Rehabilitation Company Ltd	Yes	Yes	No	Yes	Yes
Director of Services, Community Action Suffolk	Yes	Yes	Yes	Yes	Yes
Lay Members	Yes	Yes	Yes	Yes	Yes

Appendix 10.5 – Safeguarding Courses

Course	Total number of courses delivered	Total number of delegates
Behaviour Safe – Creating Safety Plans and using De-Escalation	2	4
Behaviour Safe – CYP De-Escalation Accredited Module	5	72
Behaviour Safe – Personal Safety Training	12	144
CE Multi-agency Trainer Support Forum	1	9
Safeguarding Children Train the Trainer		
Child Sexual Exploitation (CSE)	3	37
Communicating with Children and Young People affected by Early Trauma	3	24
Domestic Abuse, Mental Ill Health, Substance Misuse	4	94
Dynamics of Domestic Abuse and DASH Multi-Agency Risk Assessment	3	43
Female Genital Mutilation, Honour Based Violence, Forced Marriage	3	25
First Aid for Children Home Workers	4	30
First Aid Training for Foster Carers	5	4
Foundation in Solution Focused Practice - Brief	3	96
Gangs and Groups and Gang Related Risks to Children	2	28
Graded Care Profile Training	20	343
Harmful Sexual Behaviour – The Impact of Attachment and Trauma	1	18
Domestic Violence, Abuse and Coercive Control	3	66
Missing Children	2	19
Modern Day Slavery	7	85
Radicalisation – Safeguarding and Stereotyping	1	8
Safeguarding and E Safety for Foster Carers and Children Home Workers	1	1
Safeguarding Introduction	12	179
Safeguarding Train the Trainer	1	1
Safeguarding Trainer Support Forum	4	29
Serious Case Review Evaluation/Feedback (Baby E)	10	148
Understanding Risk with Families	3	25
Understanding the SOS Framework for Assessment and Referrals	11	24
Working Together to Safeguard Children	20	224
Workshop to Raise Awareness of Prevent (WRAP)	13	74
Young Person F SCR Learning	8	204
Practitioner Workshops		
Lowestoft and Waveney	10	131
West	2	23
Total	209	2670

Suffolk Signs of Safety and Wellbeing

Course	Total number of courses delivered	Total number of delegates
Signs of Safety Gathering	1	118
Signs of Safety 2 Day Core Training	13	164
Signs of Safety 5 Day Practice Lead Training	1	50
Signs of Safety Hub Session	3	12
Signs of Safety Group Supervision	7	41

E Learning – The number of completed courses from each module

Private Fostering	16
CAF	28
Neglect	51
Safeguarding Level 1	535
Domestic Abuse	31
Framework for the Assessment of Children and Families	14
Safeguarding Children with Disabilities	27
E Safety – Risks to Children.	56
Hate Crime	164
Total	2810