

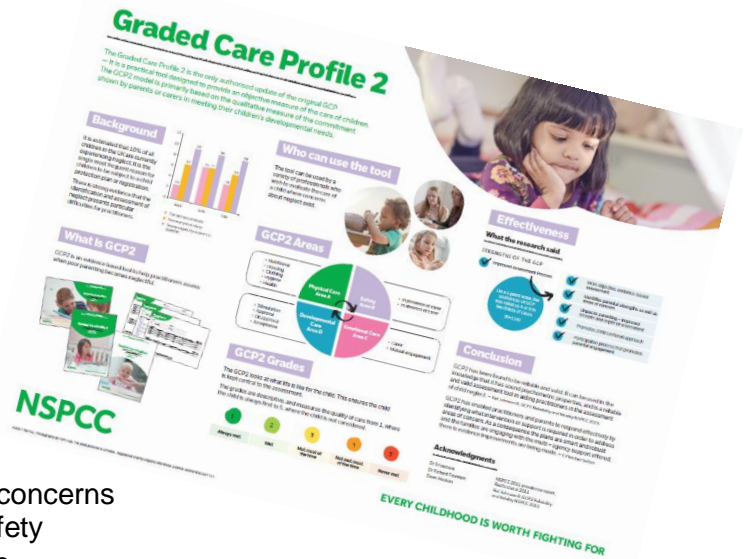
Graded Care Profile 2 (GCP2)



The tool to support you to confidently and accurately identify neglect.

What is GCP2?

- It is an evidence based assessment tool for evaluating levels of parental care.
- Uses Maslow's hierarchy of needs to ensure comprehensive coverage of child's needs
- Uses a graded scale (1-5) to capture levels of child's physical and emotional care
- Identifies parental strengths and concerns and works alongside Signs of Safety
- Targets aspects of neglectful care
- Provides evidence that can inform Care and Intervention Plans (Judges have been asking for this tool in court)



Feedback from using the GCP highlighted that areas for improvement included language: too formal / academic and perceived as value-laden; gaps in areas such as obesity, technology and age based limitations; and the format required a more substantial report, a narrative to support the scores and historical or contextual factors to be taken into consideration.

The Graded care profile has been revised and updated by the NSPCC who invited organisations to use it by offering a training and implementation package. Suffolk has decided to use the Graded care profile because it is a tool which deepens our practice around neglect and fits with Signs of Safety to support practitioners to identify whether, and to what extent, an individual child's needs are being met by capturing the quality of care provided by an individual parent or carer.

Strengths of GCP2

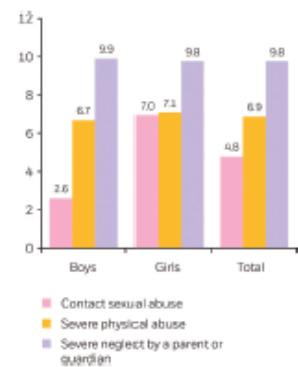
- Improved assessment process
- More objective, evidence based
- Unpacks the parenting capacity – improved breadth and depth of assessment
- Promotes child centred approach
- Participative process which encourages parental engagement
- Assessment per child

To achieve this, Suffolk County Council Workforce Development have created and developed a group of **Practice Leads [PLs]** who have an in-depth understanding of the

Background

It is estimated that 10% of all children in the UK are currently experiencing neglect. It is the single most frequent reason for children to be subject to a child protection plan or registration.

There is strong evidence that the identification and assessment of neglect presents particular difficulties for practitioners.

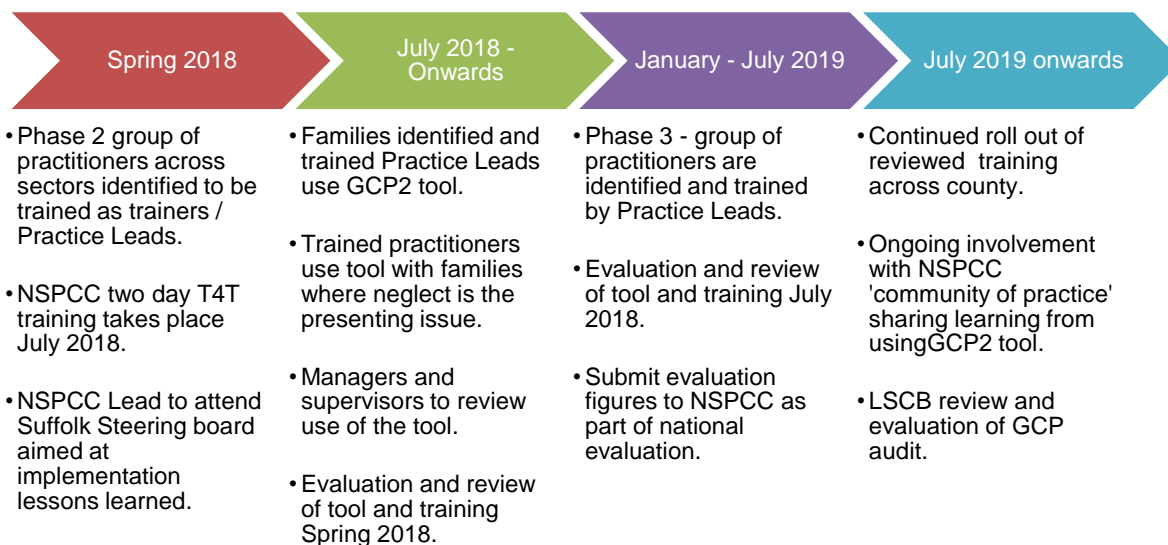


Graded Care Profile 2 (GCP2)

approach across all practice contexts, and who provide consistent leadership throughout the organisation, through working with practitioners on a regular basis.

Implementation and roll out for GCP2

The timeline below outlines the plan for further implementing the tool across Suffolk. **Only practitioners who have undertaken training by a licenced organisation and trainer can use the GCP2 tool.** The tool is currently being used with families where neglect is the presenting issue and this will be evaluated and reviewed in line with the roll out of training sessions directed at identified practitioners across health, early help, social care and education.



What do you need to do next?

Visit: <https://multiagency.suffolkcpd.co.uk/courses/bookings/default.asp> , search for; **Graded Care Profile** in the search box 'Key word'

Contact one of the Practice Leads below for any queries or issues around the use of the tool;

GCP2 Practice Lead:	Area of work:	Email:
Jenny Carter	Early Help	Jenny.Carter@suffolk.gov.uk
Elena Stanuta	Social Care	Elena.Stanuta2@suffolk.gov.uk
Vikki Marcus	Social Care	Vikki.Marcus@suffolk.gov.uk
Lisa Crane	Early Help	Lisa.Crane@suffolk.gov.uk
Adrian Munteanu	Early Help	Adrian.Munteanu@suffolk.gov.uk
Vicky Allaway	Disabled Children and Young People	Victoria.Allaway@suffolk.gov.uk
Lucy Lavender	Named Nurse Safeguarding Children	Lucy.Lavender@suffolk.gov.uk
Maureen Roscoe-Goulson	Professional Advisor	Maureen.Roscoe-Goulson@suffolk.gov.uk
Nicci Kenny	Learning and Development Advisor	Nicci.Kenny@suffolk.gov.uk